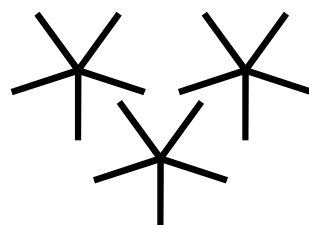
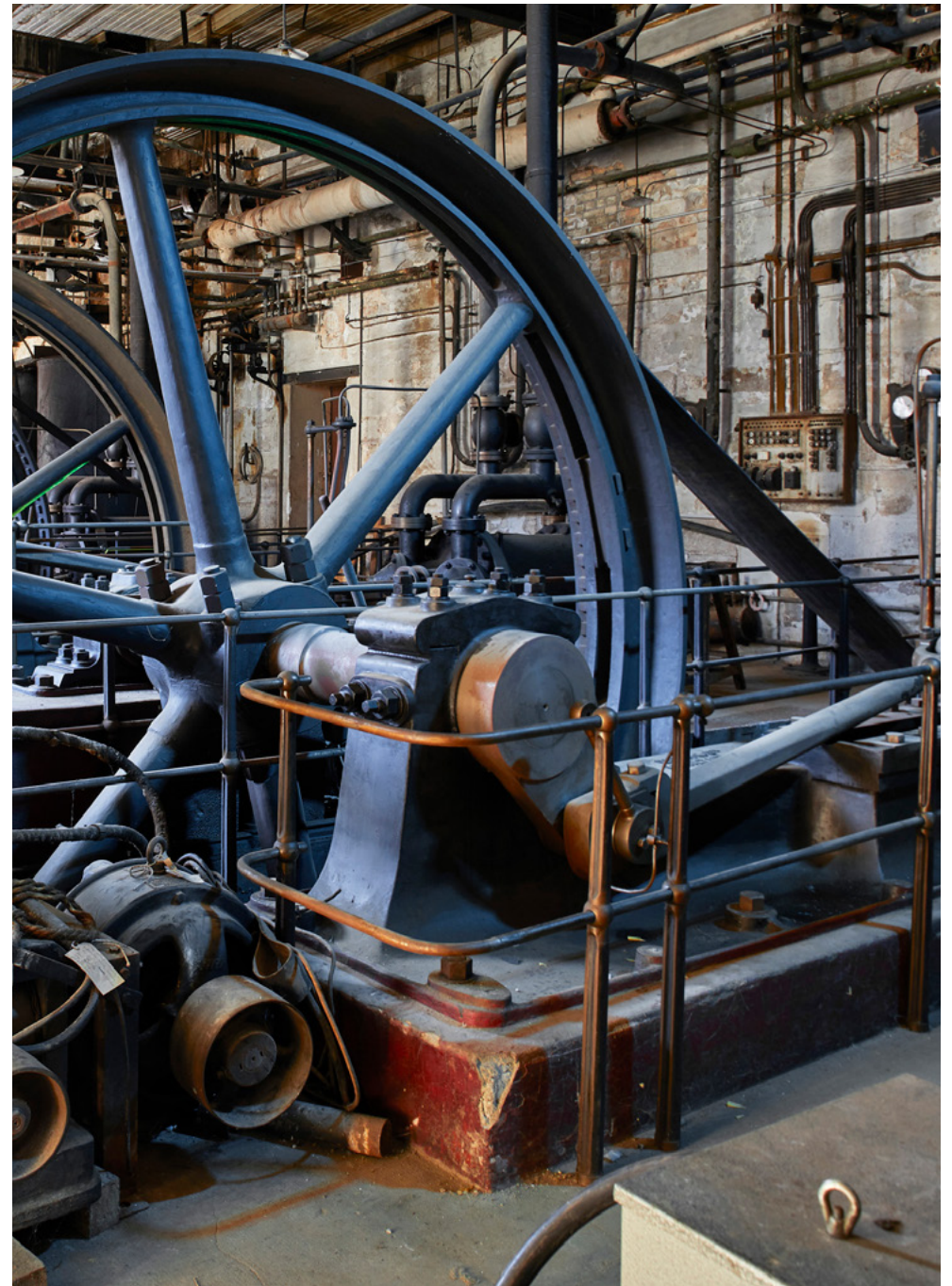
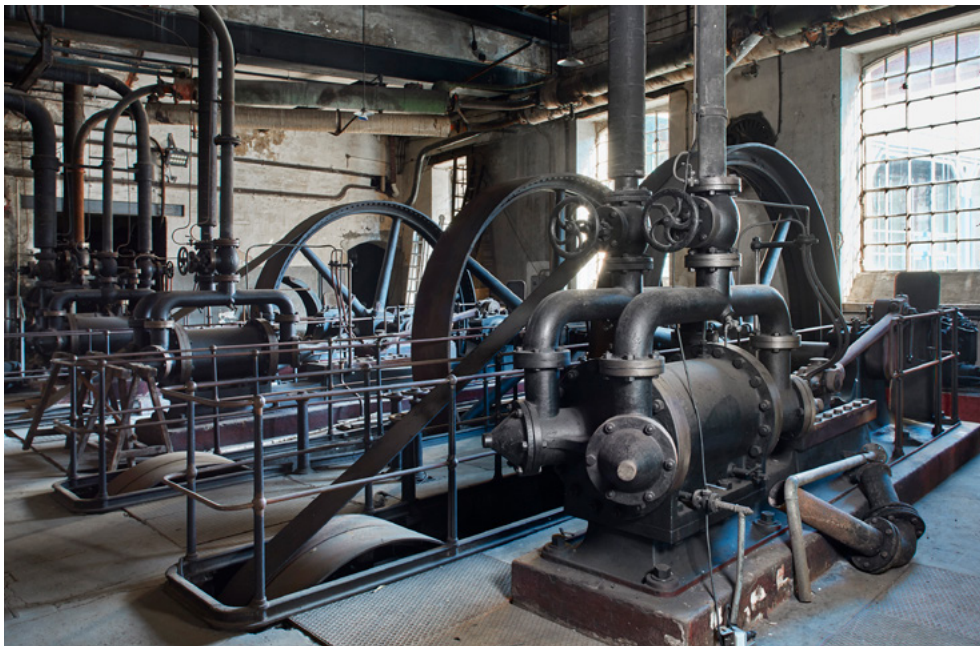


HÔTEL & PAVILLON
RÉGENT PETITE FRANCE
STRASBOURG



HISTORY & HERITAGE

This old, 17th-Century mill was home to the “Klareiswerke zur Dünzenmühle” ice factory from the 19th Century. The ice factory produced ice blocks for shops, brewers and private homes throughout the region. Production dropped when refrigerators came on the scene, then stopped completely in 1989. The REGENT PETITE FRANCE hotel opened on the 1st of May 1992, offering its guests an exceptional setting, combining history and modern times.



HÔTEL & SPA

Located in the heart of Strasbourg and on the branches of the river - a history-filled place that still houses machinery from the former Strasbourg ice factory buildings - a witness to the industry of the last century.

The REGENT PETITE FRANCE Hotel & Spa provides its guests with an exceptional setting, where the past of the three-century-old buildings contrasts with the resolutely modern decoration.

The hotel is surrounded by canals and half-timbered houses. Today it is an iconic five-star establishment typical of the picturesque Petite France district, included on the UNESCO World Heritage List since 1988.





PAVILLON RÉGENT PETITE FRANCE *****

The REGENT PETITE FRANCE opened its Pavillon in 2015 in an ancient Alsatian house. This building is part of the half-timbered houses so typical of the Petite France district, complementing the hotel's current offer, with 17 resolutely design bedrooms and a seminar room up to 12 people.

PAVILLON ROOMS

With the Petite France, the Ill and the Cathedral in the background, those 17 rooms represent a great setting for your nights. Leather and wood as well as grey and white create simple contrasts for a serene atmosphere.

EQUIPMENTS:



Wi-Fi



Television



Desk



Separate
toilets



King-sized bed
twin beds



KOS welcome products



Mini-bar



Welcome tray



View of Petite France





RÉGENT PETITE FRANCE ROOMS

Spacious, elegant and comfortable, the 75 rooms of the RÉGENT PETITE FRANCE offer a breathtaking view of the old town for all. Some of them have a little balcony.

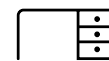
EQUIPMENTS :



Wi-Fi



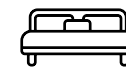
Television



Desk



Separate
toilets



King-sized bed
twin beds



KOS welcome products



Mini-bar



Welcome tray



View of Petite France



JUNIOR SUITES & SUITES

12 Junior Suites and 8 Signature Suites complete the REGENT PETITE FRANCE's offer.

The Junior Suites all have unique charm, some of them with beams, others with balconies overlooking the water.

The Signature Suites all have a view of the Ill River and Petite France.

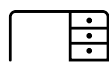
EQUIPMENT:



Wi-Fi



Television



Desk



Separate
toilets



King-sized bed
twin beds



KOS welcome products



Mini-bar



Welcome tray



View of Petite France



Sofa bed



Terrace



Lounge





THE SIMONE VEIL MINISTERIAL SUITE

The suite was given this name in honour of the woman who worked all her life both to defend women's rights and to build Europe.

Its 84 sqm surface area houses two bedrooms, two bathrooms and a spacious lounge, fitted and decorated with refinement to create harmony and foster well-being.

It has an outstanding view of the canals and the covered bridges with their fortified towers.

THE LOUISE WEISS PRESIDENTIAL SUITE

The Presidential suite was named after Louise Weiss in tribute to a female politician born in Alsace. Its surface area of 89 sqm can be extended to include an adjoining 25 sqm room.

This light-filled room offers an unique 180° view of the canals and Strasbourg's architectural heritage. A contemporary decorative style, combining delicate fabrics and selected furniture was chosen for this room.





RESTAURANT
LE PONT TOURNANT
STRASBOURG

Creative, authentic and refined! This is how we can describe the cuisine of our Chef, Julien Rodriguez, whose motto is to “put vegetables and seasonal products in the spotlight”. He invites his guests to a real culinary mix in the restaurant’s cosy setting, which offers a magnificent view of the traditional half-timbered houses of the Petite France district. On sunny days it is possible to dine on the terrace by the river Ill.

The PONT TOURNANT restaurant is open all year round from 7 pm to 10 pm from Wednesday to Saturday and can hold up to 35 people.



BREAKFAST

Lavish and packed with vitamins! The breakfast buffet consists of touch of local organic products, a selection of bread and pastries, a few sweet and savoury dishes and a wide variety of fresh products. Some products are also available gluten-free. In fine weather, the customer can have breakfast on the Ill riverbank terrace.

The breakfast tables are set every day from 7 am to 10.30 am. A leisurely start to the morning with continental breakfast in the customer's room is available on simple request.





BAR CHAMPAGNE

STRASBOURG

The CHAMPAGNE BAR is located on the Ill river, which is conducive to a peaceful frame of mind. Its name refers to the wide range of champagnes (including no less than 20 brands) on the menu. A choice of numerous digestives, spirits, wines and beers completes the offer.

The Chef also offers a menu featuring his Signature dishes, such as the club sandwich, knife-cut tartare and the inevitable Chicken Cesar Salad...

Open daily from 5 pm to 1 am.



EVENTS AND SEMINARS

The hotel has 5 modular seminar areas with daylight lighting, equipped with the state of the art technologies.

The areas may be set up to suit study days, work meetings, cocktails, conferences ...





ROOMS CAPACITY

Small format

LE LAVOIR 21M²



Boardroom : 12 people



View of the Ill River

PONTS COUVERTS 30M²



Theatre: 25 people



Classroom: 20 people



U-shape: 15 people



Cocktail: 15 people



Terrace

JEAN AMOS II 36M²



Theatre: 30 people



Classroom: 20 people



U-shape: 15 people



Cocktail: 20 people



View over La Petite France

Large format

JEAN AMOS I 67M²



Theatre: 60 people



Classroom: 40 people



U-shape: 30 people



Cocktail: 80 people

JEAN AMOS I & II 103M²



Theatre: 95 people



Classroom: 60 people



U-shape: 30 people



Cocktail: 110 people



View over La Petite France

GRAND LOBBY 135M²



Cocktail: 250 people



Banquet: 80 people



S P A

RÉGENT PETITE FRANCE

STRASBOURG

The REGENT PETITE FRANCE Spa is designed to please the senses and the emotions. It combines well-being, esthetics and beauty within a 200 sqm space. A sauna, a hammam and a sensory experience shower will help you charge your batteries.

Enjoy the terrace to sink into the water of a relaxing bath or relax on the chaises-longues, enjoying the outstanding view of the half-timbered houses along the Ill river banks.



 **SKINCEUTICALS**
ADVANCED PROFESSIONAL SKINCARE

Different treatments, modelling, exfoliation and natural product-based rituals are offered for face and body in a single or double booth where two of you can share a unique experience.

We are the only centre to offer SkinCeuticals facial care, a leading anti-age expert treatment. This trail-blazing skin beauty technology is on the border between cosmetics and pharmaceuticals.

We also use KOS Paris treatments, a high-end range of natural cosmetics, whose noble ingredients are selected from all around the world.





FITNESS ROOM

A fitness room is available for sport lovers, with a multi-purpose bench for body-building and equipment for cardio-vascular training: treadmill, exercise bike and elliptical trainer.

The REGENT PETITE FRANCE Spa is open 7 days a week from 10.30 am to 8 pm and the fitness room from 6.30 am to 11 pm.

ADDITIONAL HOTEL SERVICES



24-hour Room service



Concierge services



Porter and car valet
service



Dry cleaning service

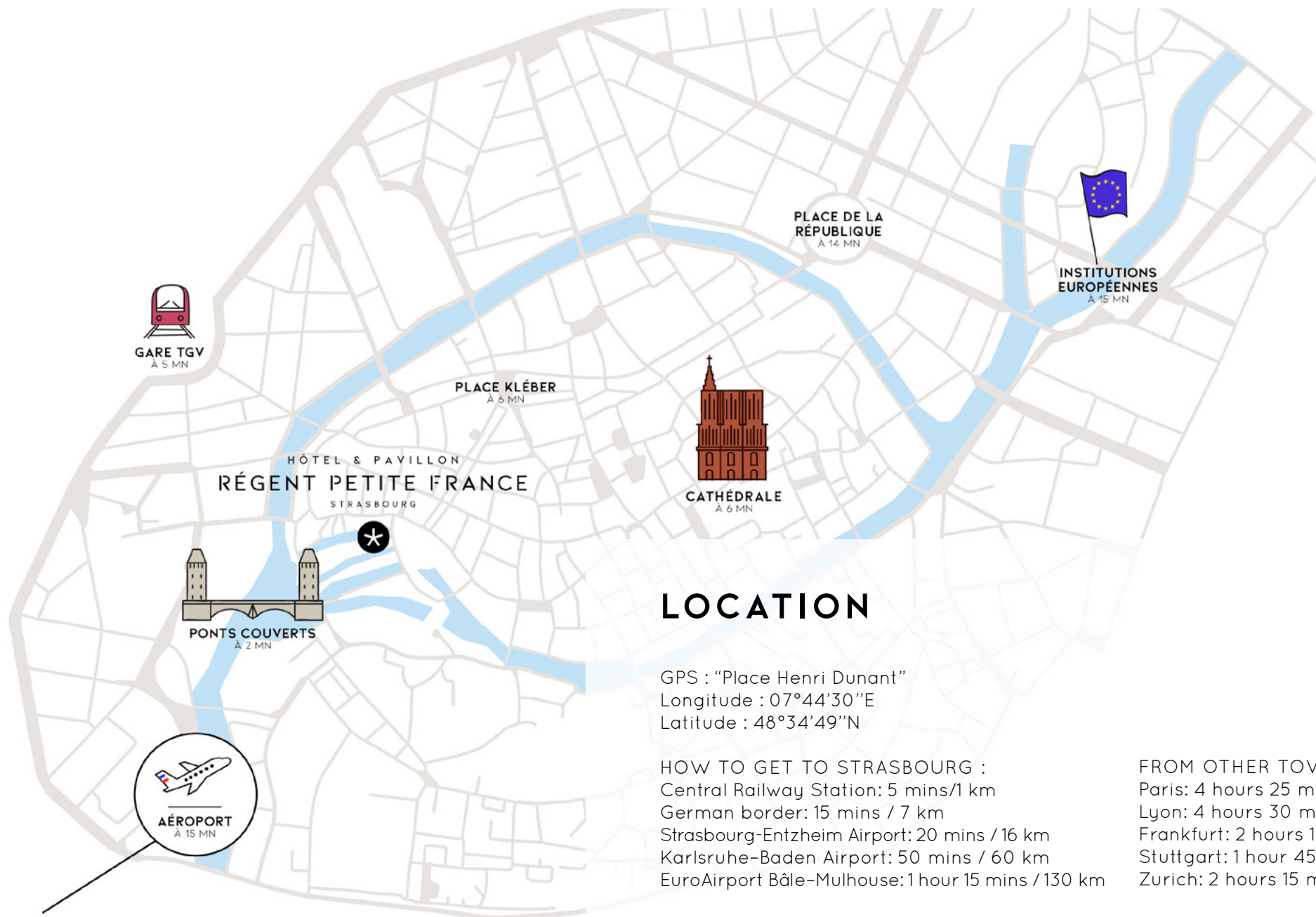


Animals accepted
(additional charge)



Private garage and outside parking
(on request and chargeable)





LOCATION

GPS : "Place Henri Dunant"
Longitude : 07°44'30"E
Latitude : 48°34'49"N

HOW TO GET TO STRASBOURG :

Central Railway Station: 5 mins / 1 km
German border: 15 mins / 7 km
Strasbourg-Entzheim Airport: 20 mins / 16 km
Karlsruhe-Baden Airport: 50 mins / 60 km
EuroAirport Bâle-Mulhouse: 1 hour 15 mins / 130 km

FROM OTHER TOWNS:

Paris: 4 hours 25 mins / 480 km
Lyon: 4 hours 30 mins / 485 km
Frankfurt: 2 hours 10 mins / 215 km
Stuttgart: 1 hour 45 mins / 160 km
Zurich: 2 hours 15 mins / 220 km

CONTACTS

For any request, please contact the SOGEHO group Sales Department

Manuela Kaiser - Sales Director

+33 (0)3 90 41 75 46 - m.kaiser@sogeho.com

For any request regarding marketing, communication and events:

Stéphanie Scharf - Marketing & Communication Director

s.scharf@sogeho.com

Discover the hotels affiliated to the SOGEHO group:



Follow the news from the RÉGENT PETITE FRANCE Hotel & Pavillon
on social media: @regentpetitefrance



Sandrine Hugonot Director of the Hotel & Pavillon RÉGENT PETITE FRANCE

5 rue des Moulins F-67000 Strasbourg - Tel : +33 (0)3 88 76 43 43

accueil@regent-petite-france.com - www.regent-petite-france.com